

# **Fact Book**

## **Academic Year 2013-2014**



Produced by the Office of Institutional Research

Issued March, 2015

## Table of Contents

<b>System Highlights</b> .....	<b>2</b>
<b>Introduction</b> .....	<b>3</b>
<b>System Summary</b> .....	<b>4</b>
<b>Demographics</b>	
• Headcount and FTE .....	6
• Headcount and FTE by Residency.....	9
• Headcount by FT/PT Status .....	10
• Headcount by Ethnicity.....	11
• Headcount by Age Group .....	12
• Headcount by Gender .....	13
• Headcount by Degree-Seeking Type .....	14
<b>Retention</b>	
• Fall to Fall Retention Rates.....	15
<b>Degrees</b>	
• Degrees Awarded by Type of Award .....	16
• Degrees Awarded by College .....	17
• Top Degree Programs by College.....	18
<b>Transfers</b>	
• Top Transfer Destinations.....	19
• Number of Student Transfers by College .....	20
• Top Private Transfer Destinations .....	21
<b>Graduation</b>	
• Three-year Graduation and Transfer Rates.....	22
• Three-year Graduation Rate Trends.....	23
• Three-year Minority Student Graduation Rate Trends .....	24
• Three-year Combined Graduation and Transfer Rate Trends.....	25
<b>Developmental Education</b>	
• Developmental Course Completion Rates by Subject .....	26
• Developmental Course Completion Rates by College.....	27
• Developmental Course Enrollments .....	27
• Developmental Course FTE Enrollments .....	28
<b>Concurrent Enrollment</b>	
• High School Students Attending CCCS Colleges .....	29
<b>Glossary</b> .....	<b>30</b>

## System Highlights

This report provides data on enrollment, retention, degrees awarded, developmental education, and high school (Concurrent) enrollment for the thirteen colleges of the Colorado Community College System. Those colleges are:

Arapahoe Community College	Northeastern Junior College
Colorado Northwestern Community College	Otero Junior College
Community College of Aurora	Pikes Peak Community College
Community College of Denver	Pueblo Community College
Front Range Community College	Red Rocks Community College
Lamar Community College	Trinidad State Junior College
Morgan Community College	

- **Enrollment** – Across the system, annual unduplicated undergraduate enrollment decreased five percent, from 141,330 to 134,324. Likewise, full-time equivalent enrollment (FTE) declined from 59,063.7 to 56,083.0, a five percent decrease. In addition to the undergraduate population, CCCS trains more than 17,000 Coloradans each year through various other programs, making it the largest higher education system in the state.
- **Fall to Fall Retention** – The overall retention rate of full and part-time students increased from 47.1 percent to 47.8 percent.
- **Degrees Awarded** - CCCS colleges awarded 17,099 degrees in AY 2013-2014, an increase of 8.7 percent over the AY 2012-13 level of 15,729. Although the increase in degrees is inflated by a change in data collection and reporting, the number of credentials awarded would have increased 1.3 percent without the reporting change.
- **Graduation Rate** - The graduation rate for first-time, full-time, degree-seeking students was 20.4 percent.
- **Developmental Education** - The proportion of students enrolled in remedial courses dropped from 26.6 percent in AY 2012-13 to 22.9 percent in AY 2013-14, while the proportion of FTE dropped from 13.4 percent to 10.7 percent. The overall system remedial completion rate was 68.2 percent.
- **High School Student Enrollment** – High school students attending CCCS colleges increased 12.5 percent, from 16,780 to 18,885. Over the last five years, the number of high school students attending CCCS colleges has doubled.

The data in this report are in tabular and/or graphic format. Data are from the Colorado Student Unit Record Data System (SURDS) or other data reported to the Colorado Department of Higher Education (CDHE), the federal Integrated Postsecondary Education Data System (IPEDS), or the National Student Clearinghouse (NSC). As SURDS and other reports submitted to CDHE are the predominant sources of data, a data source is indicated only if they are not the data source.

## **Introduction**

This fact book provides various student data for the thirteen colleges of the Colorado Community College System (CCCS). It is intended to be a one-stop resource for information. The Office of Institutional Research at the system office produces this report. Additional information about some of the subjects in this document, as well as previous year's fact books, can be found at <https://www.cccs.edu/about-cccs/institutional-research/>.

A Glossary of Terms is also included at the end of the document that provides additional descriptions and definitions to assist the reader.

**Colorado Community College System  
Summary Data – Fall 2013 and Annual 2013-14**

<u>Enrollment Type</u>	<u>Fall 2013</u>		<u>Annual</u>	
	<u>Headcount</u>	<u>FTE</u>	<u>Headcount</u>	<u>FTE</u>
Resident	81,547	23,513.2	120,665	52,804.1
Non-Resident	6,965	1,468.8	13,621	3,278.9
Unknown*	N/A	N/A	38	N/A
<b>Total</b>	<b>88,512</b>	<b>24,982.0</b>	<b>134,324</b>	<b>56,083.0</b>

\*Headcount and FTE data are derived from two different data submittals to CDHE, explaining the fact that the residency of some students is not known for headcount figures but is available for the FTE count.

<u>Demographics</u>	<u>Headcount</u>	<u>% of Total</u>	<u>Headcount</u>	<u>% of Total</u>
Minority	28,311	34.5%	42,772	34.5%
Female	48,928	55.6%	72,658	54.5%
Average Age	27		27	

<u>Enrollment Characteristics</u>	<u>Count</u>	<u>% of Total</u>	<u>Count</u>	<u>% of Total</u>
First Time Students	12,255	13.8%	19,042	14.2%
Transfer Students	9,008	10.2%	19,965	14.9%
Continuing Students	55,014	62.2%	76,124	56.7%
High School Students	12,232	13.8%	18,885	14.1%
Unknown	3	0.0%	308	0.2%
<b>Total</b>	<b>88,512</b>	<b>100.0%</b>	<b>134,324</b>	<b>100.0%</b>

<u>Headcount by Degree Type</u>	<u>Count</u>	<u>% of Total</u>	<u>Count</u>	<u>% of Total</u>
Associate of Arts or Associate of Science (AA or AS)	37,976	42.9%	54,099	40.3%
Associate of Applied Science (AAS)	20,886	23.6%	28,632	21.3%
Associate of General Studies (AGS)	9,856	11.1%	13,888	10.3%
Certificate	7,477	8.4%	13,920	10.4%
Non-degree/Unknown	12,317	13.9%	23,785	17.7%
<b>Total</b>	<b>88,512</b>	<b>100.0%</b>	<b>134,324</b>	<b>100.0%</b>

**Average Class Size\*** 17 17

\*Excludes online courses and those with less than 6 enrollments.

## Summary Data – Continued

<u>Degrees Awarded - 2013-14</u>	<u>Headcount</u>	<u>% of Total</u>
AA	2,370	13.9%
AS	850	5.0%
AAS	2,860	16.7%
AGS	1,155	6.8%
2-yr Certificate	1,751	10.2%
1-yr Certificate	8,113	47.4%
<b>Total</b>	<b>17,099</b>	<b>100.0%</b>

### Outcomes

Fall 2012 to Fall 2013 Retained or Completed		47.8%
Three-Year Graduation Rate (Based on Fall 2010 cohort)		20.4%
Students Transferred in Fall 2013	12,655	
Transfers to 4-year colleges	11,524	
Transfers to 2-year colleges	1,131	
Remedial Completion Rate (AY 2013-2014)		68.2%

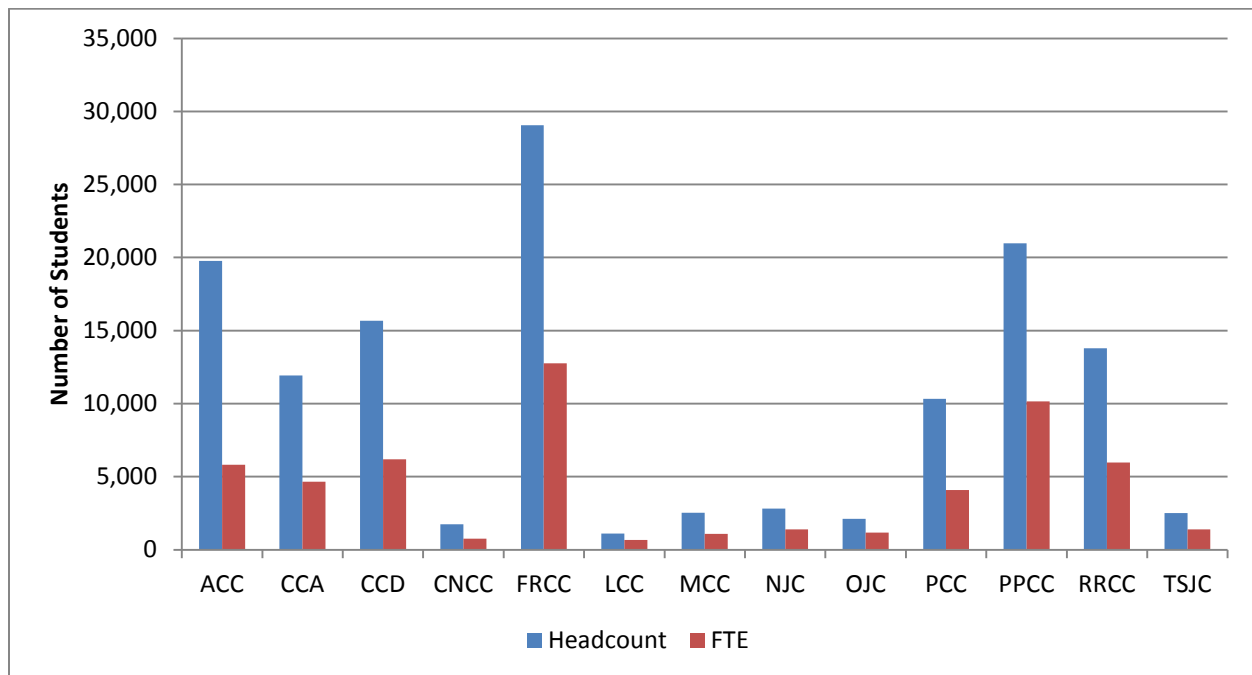
### Tuition - 2013- 2014\*

Annual Full-time Resident Tuition	\$3,585.00
Annual Full-time Non-Resident Tuition:	
ACC, CCA, CCD, FRCC, MCC, PCC, PPCC, RRCC	\$14,709
CNCC, LCC, OJC, TSJC	\$6,704
NJC	\$11,765

\*Based on 30 credit hours; non-resident tuition may be lower based on a student's state of residence.

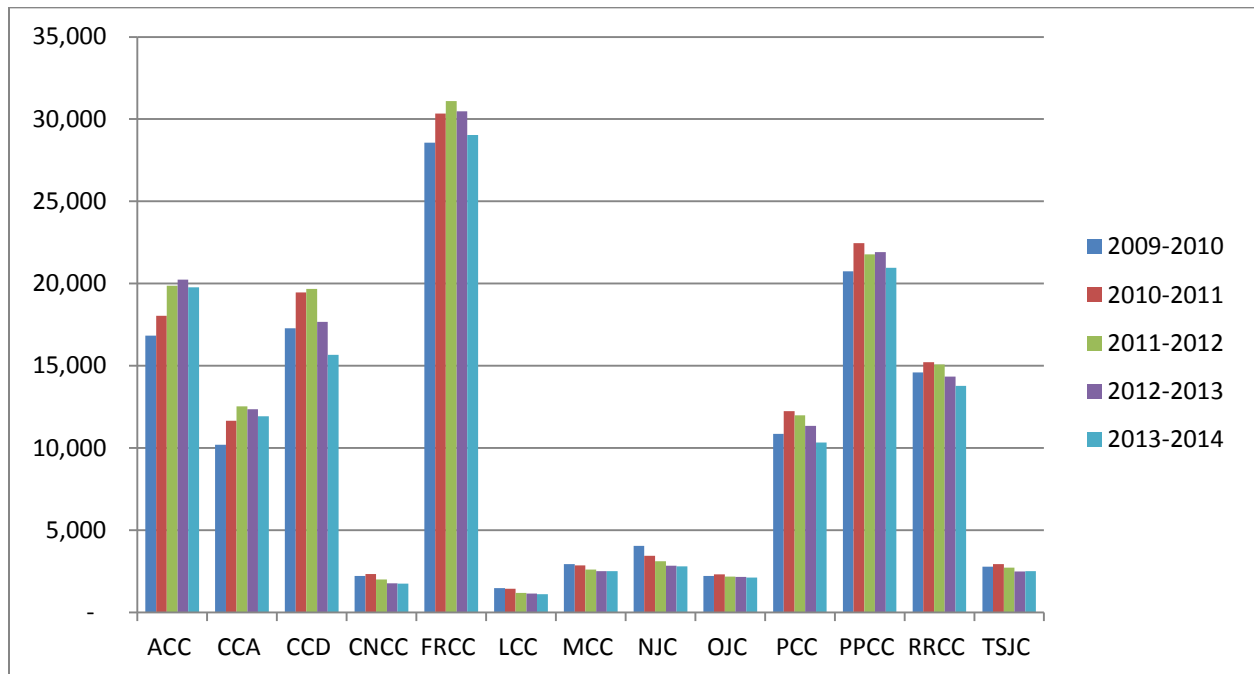
### Headcount and FTE by College: 2013-14

College	Headcount*	Percent of Total Headcount	FTE	Percent of Total FTE
ACC	19,775	14.7%	5,826.1	10.4%
CCA	11,935	8.9%	4,644.4	8.3%
CCD	15,669	11.7%	6,195.1	11.0%
CNCC	1,751	1.3%	752.2	1.3%
FRCC	29,044	21.6%	12,759.2	22.8%
LCC	1,109	0.8%	679.2	1.2%
MCC	2,520	1.9%	1,077.1	1.9%
NJC	2,806	2.1%	1,387.7	2.5%
OJC	2,121	1.6%	1,163.1	2.1%
PCC	10,331	7.7%	4,082.2	7.3%
PPCC	20,962	15.6%	10,146.5	18.1%
RRCC	13,787	10.3%	5,971.0	10.6%
TSJC	2,514	1.9%	1,399.3	2.50%
<b>CCCS Total</b>	<b>134,324</b>	<b>100.0%</b>	<b>56,083.1</b>	<b>100.0%</b>



### Annual Headcount Enrollment: 2009-2010 to 2013-2014

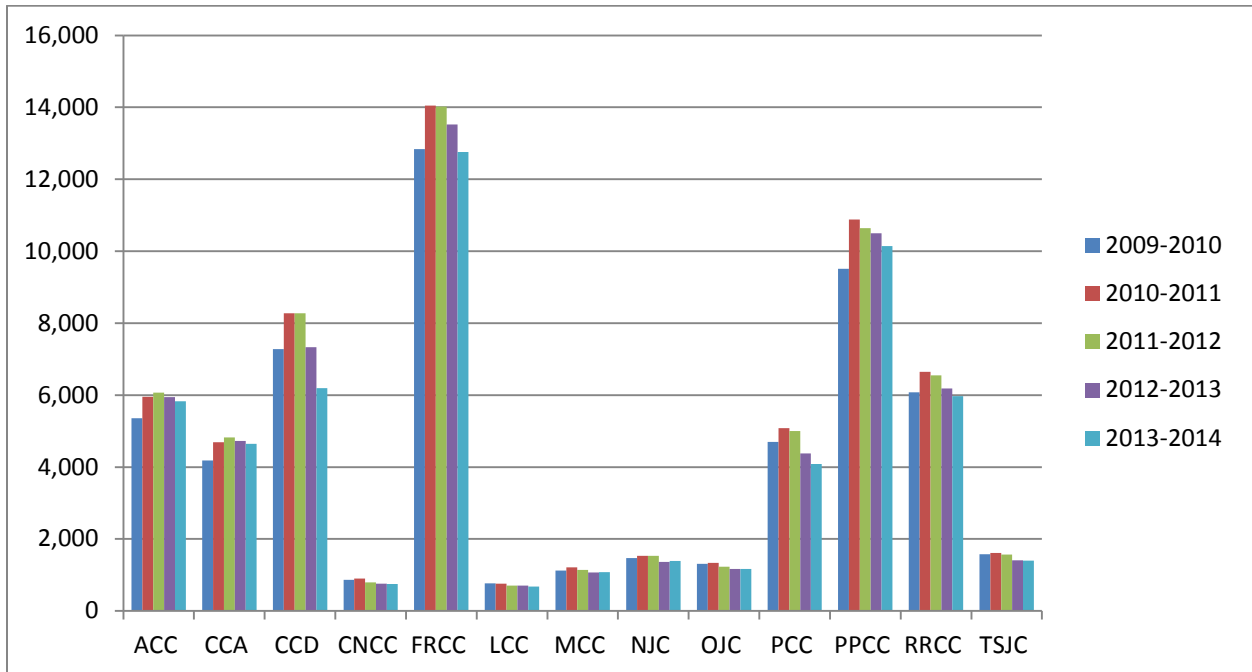
College	2009-2010	2010-2011	2011-2012	2012-2013	2013-2014
ACC	16,833	18,036	19,881	20,246	19,775
CCA	10,192	11,663	12,533	12,357	11,935
CCD	17,274	19,455	19,682	17,672	15,669
CNCC	2,217	2,341	2,009	1,776	1,751
FRCC	28,577	30,331	31,103	30,485	29,044
LCC	1,476	1,437	1,195	1,151	1,109
MCC	2,935	2,865	2,620	2,518	2,520
NJC	4,050	3,451	3,113	2,849	2,806
OJC	2,217	2,321	2,177	2,156	2,121
PCC	10,853	12,245	11,995	11,345	10,331
PPCC	20,747	22,462	21,782	21,922	20,962
RRCC	14,603	15,229	15,090	14,352	13,787
TSJC	2,779	2,947	2,730	2,501	2,514
<b>CCCS Total</b>	<b>134,753</b>	<b>144,783</b>	<b>145,910</b>	<b>141,330</b>	<b>134,324</b>





Annual FTE Enrollment: 2009-2010 to 2013-2014

College	2009-2010	2010-2011	2011-2012	2012-2013	2013-2014
ACC	5,359.3	5,949.3	6,066.9	5,942.0	5,826.1
CCA	4,184.9	4,693.2	4,819.4	4,729.7	4,644.4
CCD	7,282.0	8,273.0	8,277.2	7,328.7	6,195.1
CNCC	861.9	902.8	795.9	756.6	752.2
FRCC	12,836.0	14,051.4	14,024.5	13,525.9	12,759.2
LCC	763.2	762.6	705.5	706.9	679.2
MCC	1,120.8	1,209.7	1,136.4	1,069.4	1,077.1
NJC	1,467.0	1,531.2	1,528.9	1,366.3	1,387.7
OJC	1,312.0	1,338.8	1,225.9	1,167.6	1,163.1
PCC	4,703.2	5,082.5	5,004.8	4,377.0	4,082.2
PPCC	9,512.5	10,882.0	10,640.7	10,500.0	10,146.5
RRCC	6,074.5	6,649.8	6,545.6	6,185.9	5,971.0
TSJC	1,575.1	1,614.0	1,568.8	1,407.6	1,399.3
<b>CCCS Total</b>	<b>57,052.4</b>	<b>62,940.2</b>	<b>62,340.7</b>	<b>59,063.7</b>	<b>56,083.0</b>



### Headcount Residency by Type and by College: 2013-14

College	Resident		Non-Resident		Total	
	Headcount	Percentage	Headcount	Percentage	Headcount	% of CCCS Total
ACC	14,902	75.4%	4,873	24.6%	19,775	14.7%
CCA	11,554	96.8%	381	3.2%	11,935	8.9%
CCD	14,414	92.0%	1,255	8.0%	15,669	11.7%
CNCC	1,532	87.5%	219	12.5%	1,751	1.3%
FRCC	26,916	92.8%	2,095	7.2%	29,011	21.6%
LCC	974	87.8%	135	12.2%	1,109	0.8%
MCC	2,483	98.6%	36	1.4%	2,519	1.9%
NJC	2,579	91.9%	227	8.1%	2,806	2.1%
OJC	1,969	92.8%	152	7.2%	2,121	1.6%
PCC	7,909	76.6%	2,422	23.4%	10,331	7.7%
PPCC	20,075	95.8%	884	4.2%	20,959	15.6%
RRCC	13,097	95.0%	689	5.0%	13,786	10.3%
TSJC	2,261	89.9%	253	10.1%	2,514	1.9%
<b>CCCS Total*</b>	<b>120,665</b>	<b>89.9%</b>	<b>13,621</b>	<b>10.1%</b>	<b>134,286</b>	<b>100.0%</b>

\* The total headcount does not sum to 134,324 because 38 student records did contain residency information.

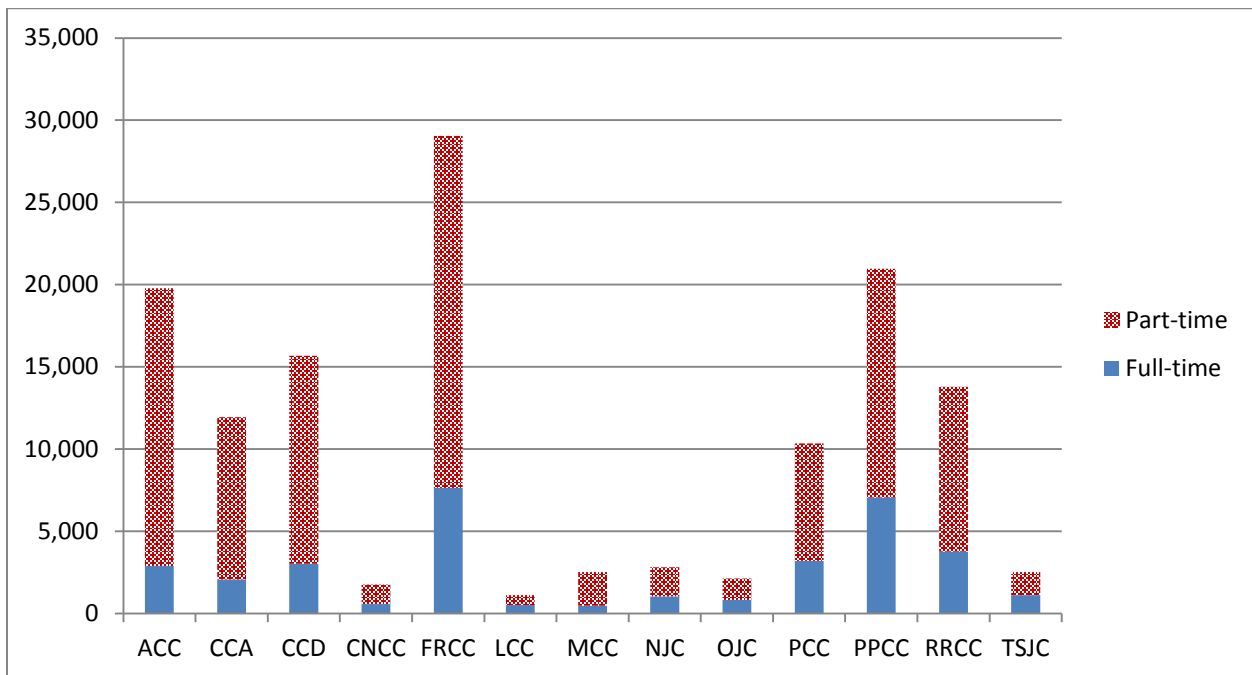
### FTE Residency by Type and by College: 2013-14

College	Resident		Non-Resident		Total	
	FTE	Percentage	FTE	Percentage	FTE	% of CCCS Total
ACC	5,598.1	96.1%	228.0	3.9%	5,826.1	10.4%
CCA	4,476.7	96.4%	167.8	3.6%	4,644.4	8.3%
CCD	5,665.0	91.4%	530.1	8.6%	6,195.1	11.0%
CNCC	613.6	81.6%	138.6	18.4%	752.2	1.3%
FRCC	11,934.2	93.5%	825.1	6.5%	12,759.2	22.8%
LCC	573.8	84.5%	105.3	15.5%	679.2	1.2%
MCC	1,061.9	98.6%	15.3	1.4%	1,077.1	1.9%
NJC	1,287.8	92.8%	99.8	7.2%	1,387.7	2.5%
OJC	1,023.8	88.0%	139.3	12.0%	1,163.1	2.1%
PCC	3,943.8	96.6%	138.4	3.4%	4,082.2	7.3%
PPCC	9,794.2	96.5%	352.2	3.5%	10,146.5	18.1%
RRCC	5,585.2	93.5%	385.8	6.5%	5,971.0	10.6%
TSJC	1,246.0	89.0%	153.3	11.0%	1,399.3	2.5%
<b>CCCS Total</b>	<b>52,804.1</b>	<b>94.2%</b>	<b>3,278.9</b>	<b>5.8%</b>	<b>56,083.0</b>	<b>100.0%</b>

### Headcount by Full- and Part-time Status by College: 2013-14

College	Full Time		Part Time		Total	
	Headcount	Percentage	Headcount	Percentage	Headcount	Percent of Total
ACC	2,882	14.6%	16,893	85.4%	19,775	14.7%
CCA	2,059	17.3%	9,876	82.7%	11,935	8.9%
CCD	3,019	19.3%	12,650	80.7%	15,669	11.7%
CNCC	561	32.0%	1,190	68.0%	1,751	1.3%
FRCC	7,638	26.3%	21,406	73.7%	29,044	21.6%
LCC	511	46.1%	598	53.9%	1,109	0.8%
MCC	481	19.1%	2,039	80.9%	2,520	1.9%
NJC	1,044	37.2%	1,762	62.8%	2,806	2.1%
OJC	814	38.4%	1,307	61.6%	2,121	1.6%
PCC	3,188	30.9%	7,143	69.1%	10,331	7.7%
PPCC	7,045	33.6%	13,917	66.4%	20,962	15.6%
RRCC	3,766	27.3%	10,021	72.7%	13,787	10.3%
TSJC	1,117	44.4%	1,397	55.6%	2,514	1.9%
<b>CCCS Total</b>	<b>34,125</b>	<b>25.4%</b>	<b>100,199</b>	<b>74.6%</b>	<b>134,324</b>	<b>100.0%</b>

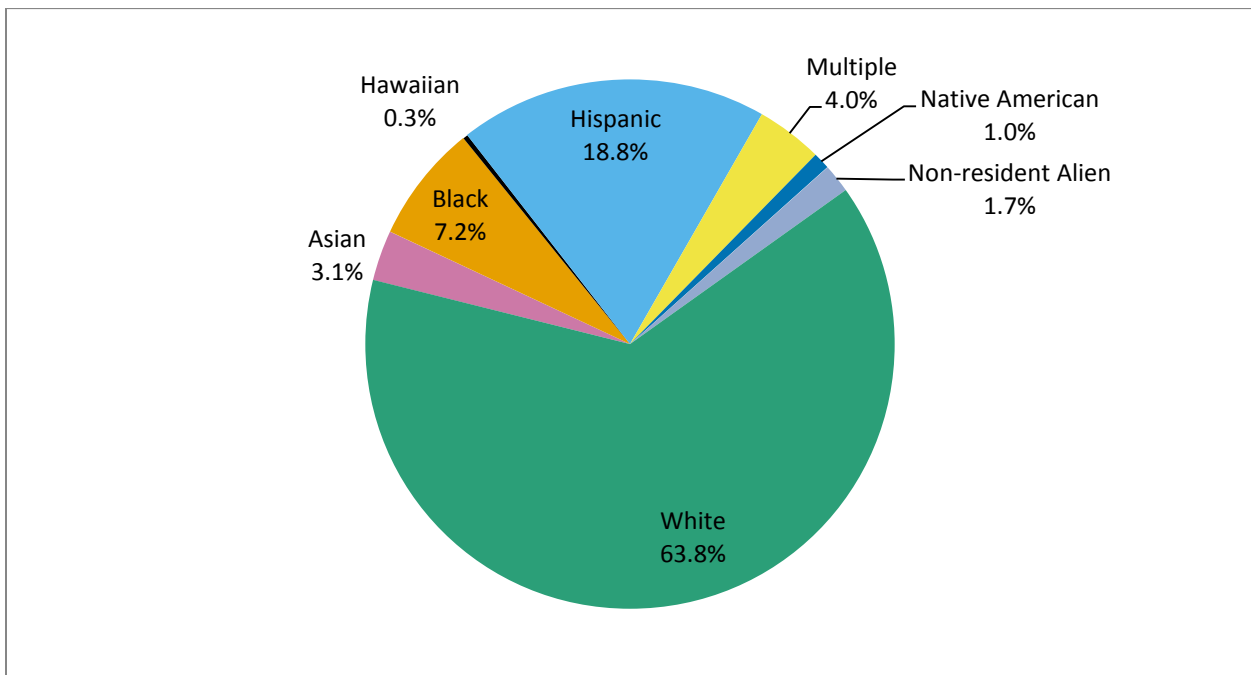
\*FT/PT status is based on the number of credit hours a student took during his or her first term in the academic year, with the exception of summer, unless a student was only enrolled in the summer term.



### Percentage of Headcount by Ethnicity by College: 2013-14

College	Asian	Black or African American	Hawaiian or Pacific Islander	Hispanic	More than one Race/ Ethnicity (non Hispanic)	Native American or Alaska Native	Non-resident Alien	White	Total Minority
ACC	3.0%	3.5%	0.2%	19.5%	3.6%	0.7%	0.7%	68.7%	30.7%
CCA	5.7%	23.0%	0.4%	20.2%	6.1%	0.6%	1.7%	42.3%	56.0%
CCD	5.4%	16.8%	0.3%	28.1%	4.7%	1.2%	6.0%	37.5%	56.5%
CNCC	0.8%	2.0%	0.3%	8.0%	3.4%	1.5%	0.6%	83.5%	15.9%
FRCC	3.4%	1.7%	0.3%	14.0%	3.4%	0.8%	1.6%	74.8%	23.5%
LCC	0.4%	3.4%	0.2%	25.9%	2.8%	1.1%	5.3%	60.9%	33.8%
MCC	0.7%	1.7%	0.0%	15.9%	1.5%	0.4%	1.5%	78.2%	20.3%
NJC	0.5%	4.1%	0.2%	9.4%	2.0%	0.7%	0.9%	82.4%	16.7%
OJC	0.7%	3.0%	0.3%	31.2%	3.0%	1.2%	2.9%	57.5%	39.6%
PCC	0.9%	5.7%	0.2%	29.7%	2.8%	2.9%	0.6%	57.2%	42.2%
PPCC	2.5%	8.8%	0.6%	14.0%	5.9%	0.9%	0.5%	66.8%	32.6%
RRCC	2.6%	2.1%	0.2%	13.8%	3.2%	0.9%	1.4%	75.8%	22.8%
TSJC	0.9%	3.2%	0.0%	40.5%	1.8%	1.3%	1.4%	50.9%	47.7%
<b>CCCS Total</b>	<b>3.1%</b>	<b>7.2%</b>	<b>0.3%</b>	<b>18.8%</b>	<b>4.0%</b>	<b>1.0%</b>	<b>1.7%</b>	<b>63.8%</b>	<b>34.5%</b>

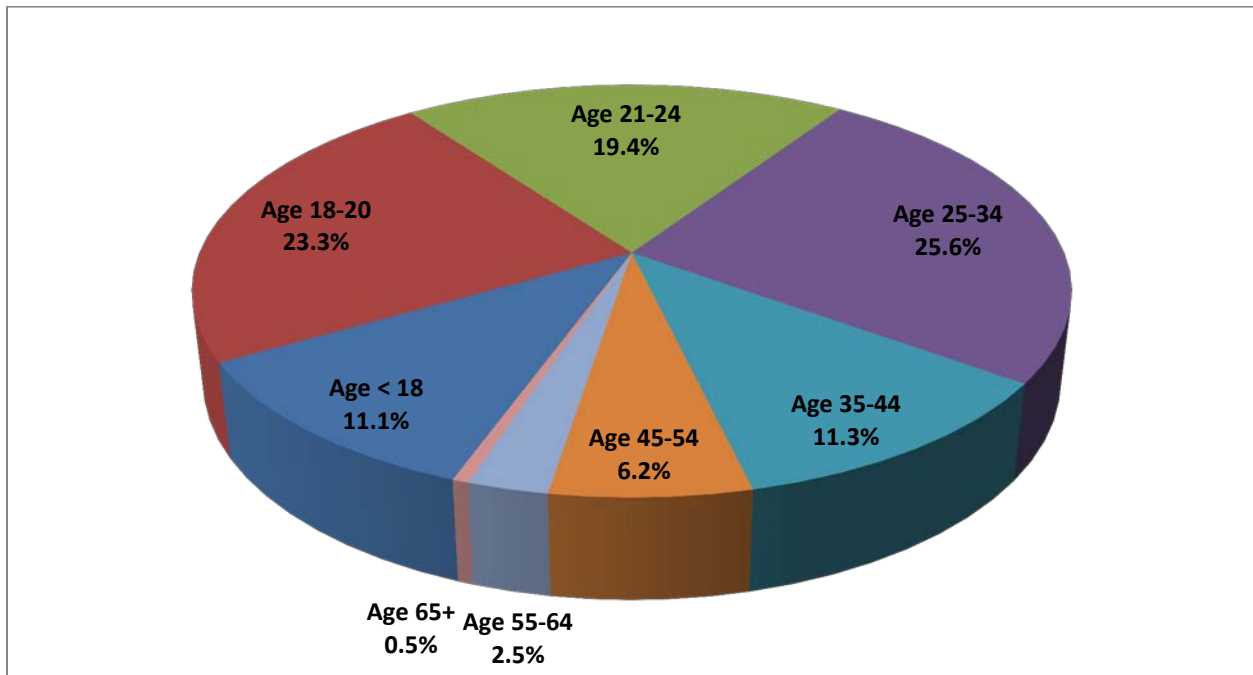
Percentages are based on reported data only; 7.7 percent of students did not report ethnicity. The minority percentage includes students reporting as Asian, black or African American, Hawaiian or Pacific Islander, Hispanic, multiple races, and Native American or Alaska Native.



### Percent of Headcount by Age Group by College: 2013-14

College	<18	18-20	21-24	25-34	35-44	45-54	55-64	65+	Average Age	Median Age
ACC	14.6%	19.0%	14.4%	27.1%	14.3%	7.4%	2.7%	0.3%	28	25
CCA	21.8%	21.2%	15.1%	22.6%	11.6%	5.3%	2.1%	0.4%	26	22
CCD	9.8%	23.8%	23.1%	27.2%	9.3%	4.6%	1.8%	0.3%	26	23
CNCC	23.5%	23.1%	11.9%	17.1%	9.6%	7.6%	6.2%	1.0%	28	21
FRCC	7.4%	25.8%	24.6%	25.6%	9.6%	5.0%	1.8%	0.3%	26	23
LCC	24.3%	41.0%	14.3%	11.5%	5.4%	2.1%	1.1%	0.3%	22	19
MCC	24.5%	25.3%	10.1%	15.1%	9.1%	7.4%	5.2%	3.3%	28	21
NJC	9.5%	36.2%	10.1%	15.1%	10.8%	10.8%	5.6%	1.8%	29	22
OJC	22.1%	31.1%	13.4%	13.4%	8.2%	5.5%	3.3%	3.1%	26	20
PCC	7.5%	18.6%	17.4%	28.5%	15.7%	8.7%	3.2%	0.6%	30	26
PPCC	6.3%	23.5%	21.5%	28.9%	11.3%	6.1%	2.2%	0.3%	27	24
RRCC	8.7%	22.3%	20.1%	26.3%	11.6%	7.0%	3.3%	0.6%	28	24
TSJC	15.9%	29.8%	14.6%	19.1%	9.7%	6.9%	3.2%	0.9%	27	21
<b>CCCS Total</b>	<b>11.1%</b>	<b>23.3%</b>	<b>19.4%</b>	<b>25.6%</b>	<b>11.3%</b>	<b>6.2%</b>	<b>2.5%</b>	<b>0.5%</b>	<b>27</b>	<b>24</b>

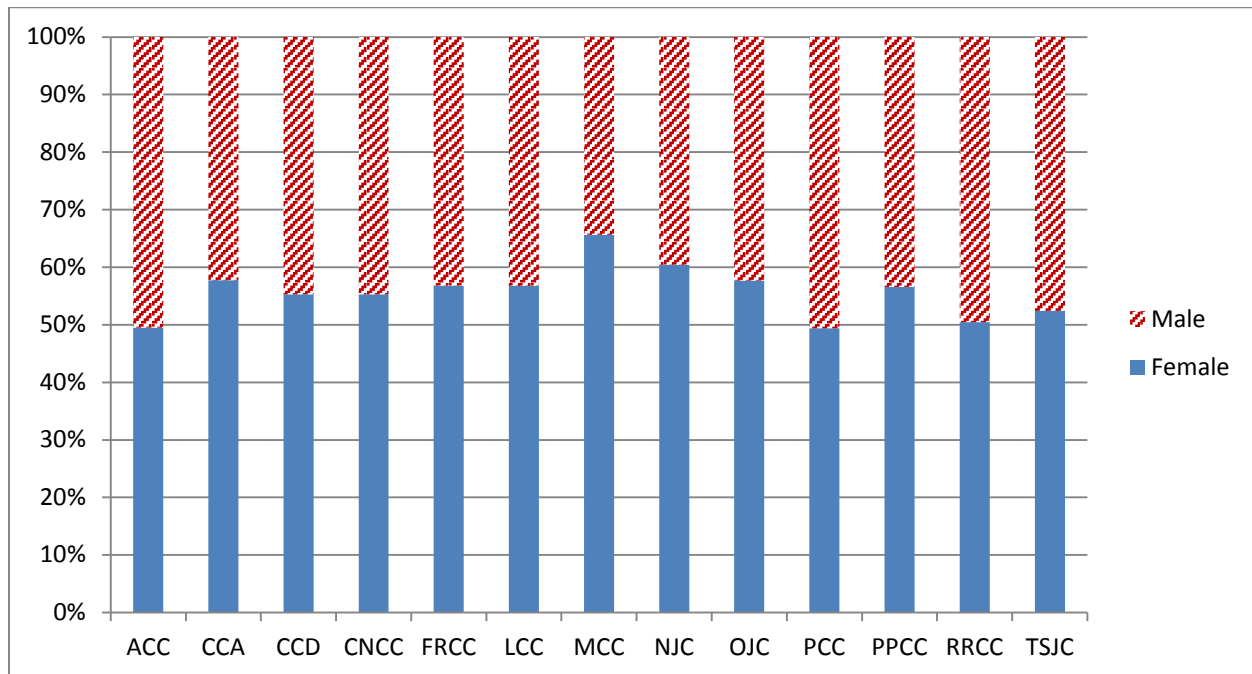
Age is calculated from December 31, 2013. Percentages are based on reported data only. A small number of students, less than 0.01 percent, did not report a birth date.



### Headcount by Gender by College: 2013-14

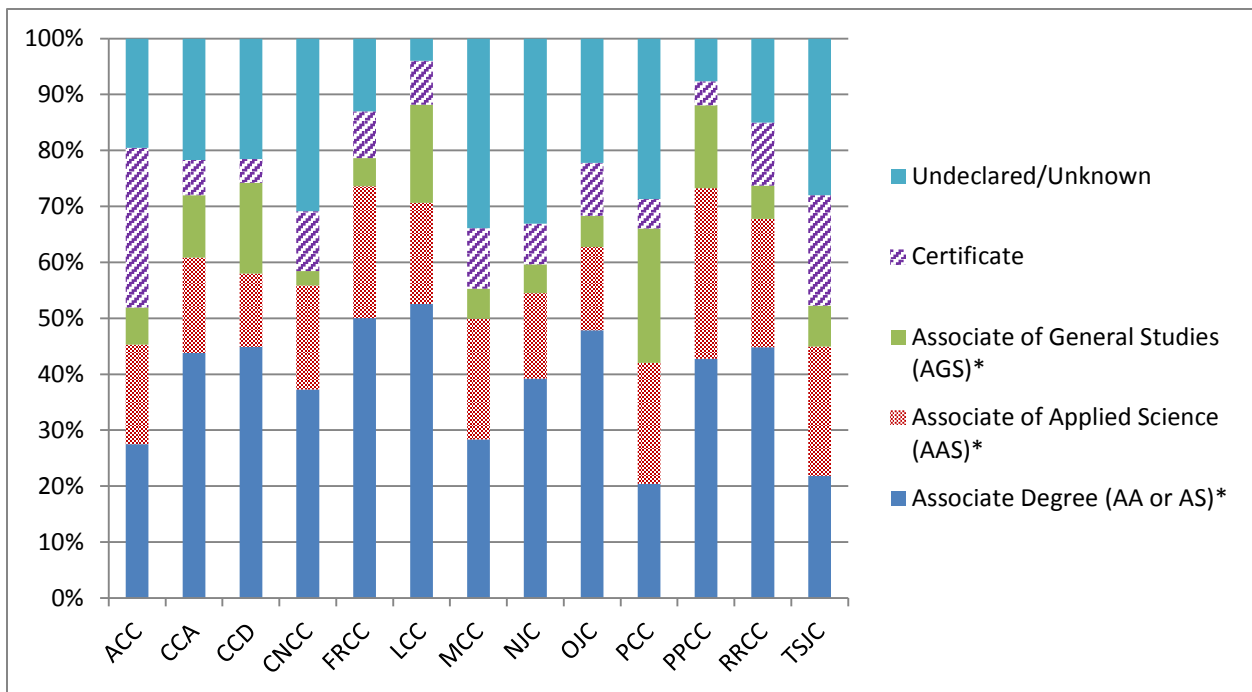
College	Female		Male		Total Count
	Headcount	Percentage	Headcount	Percentage	
ACC	9,342	49.5%	9,527	50.5%	18,869
CCA	6,868	57.7%	5,031	42.3%	11,899
CCD	8,630	55.3%	6,979	44.7%	15,609
CNCC	947	55.3%	767	44.7%	1,714
FRCC	16,479	56.8%	12,555	43.2%	29,034
LCC	628	56.7%	479	43.3%	1,107
MCC	1,643	65.6%	861	34.4%	2,504
NJC	1,691	60.4%	1,109	39.6%	2,800
OJC	1,221	57.7%	896	42.3%	2,117
PCC	5,103	49.4%	5,227	50.6%	10,330
PPCC	11,850	56.5%	9,110	43.5%	20,960
RRCC	6,942	50.5%	6,817	49.5%	13,759
TSJC	1,314	52.4%	1,194	47.6%	2,508
<b>CCCS Total</b>	<b>72,658</b>	<b>54.5%</b>	<b>60,552</b>	<b>45.5%</b>	<b>133,210</b>

Counts are based on reported data only. About 0.8 percent of students did not report gender.



### Headcount by Degree-Seeking Type by College: 2013-14

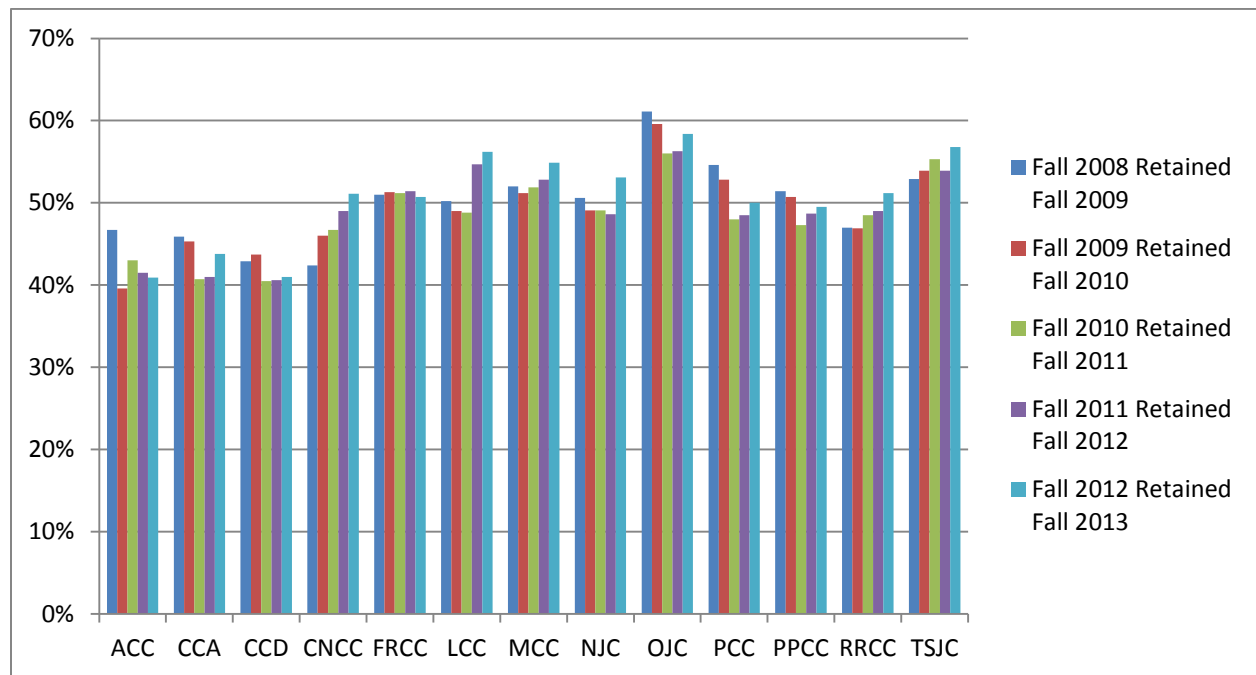
College	Associate Degree (AA or AS)*	Associate of Applied Science (AAS)*	Associate of General Studies (AGS)*	Certificate	Undeclared/Unknown	Total
ACC	5,434	3,527	1,311	5,645	3,858	19,775
CCA	5,226	2,036	1,333	749	2,591	11,935
CCD	7,030	2,053	2,551	659	3,376	15,669
CNCC	653	325	45	188	540	1,751
FRCC	14,541	6,832	1,469	2,420	3,782	29,044
LCC	583	200	195	87	44	1,109
MCC	714	544	136	272	854	2,520
NJC	1,100	430	143	205	928	2,806
OJC	1,015	316	117	202	471	2,121
PCC	2,109	2,234	2,480	545	2,963	10,331
PPCC	8,961	6,395	3,103	902	1,601	20,962
RRCC	6,184	3,159	821	1,550	2,073	13,787
TSJC	549	581	184	496	704	2,514
<b>CCCS Total</b>	<b>54,099</b>	<b>28,632</b>	<b>13,888</b>	<b>13,920</b>	<b>23,785</b>	<b>134,324</b>



Fall to Fall Full- and Part-Time Retention Trends: Fall 2009 to Fall 2013

College	Fall 2008 Retained Fall 2009	Fall 2009 Retained Fall 2010	Fall 2010 Retained Fall 2011	Fall 2011 Retained Fall 2012	Fall 2012 Retained Fall 2013
ACC	46.7%	39.6%	43.0%	41.5%	40.9%
CCA	45.9%	45.3%	40.7%	41.0%	43.8%
CCD	42.9%	43.7%	40.5%	40.6%	41.0%
CNCC	42.4%	46.0%	46.7%	49.0%	51.1%
FRCC	51.0%	51.3%	51.2%	51.4%	50.7%
LCC	50.2%	49.0%	48.8%	54.7%	56.2%
MCC	52.0%	51.2%	51.9%	52.8%	54.9%
NJC	50.6%	49.1%	49.1%	48.6%	53.1%
OJC	61.1%	59.6%	56.0%	56.3%	58.4%
PCC	54.6%	52.8%	48.0%	48.5%	50.0%
PPCC	51.4%	50.7%	47.3%	48.7%	49.5%
RRCC	47.0%	46.9%	48.5%	49.0%	51.2%
TSJC	52.9%	53.9%	55.3%	53.9%	56.8%
<b>CCCS Total</b>	<b>49.2%</b>	<b>48.1%</b>	<b>46.9%</b>	<b>47.1%</b>	<b>47.8%</b>

Note: Fall to fall retention of all students adjusted for graduations and awards.



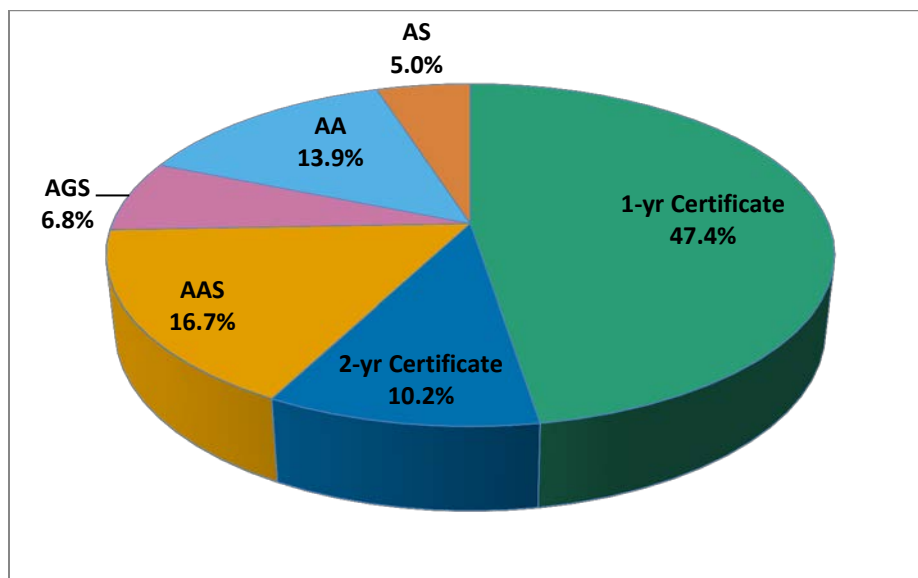


### Degrees Awarded by Type of Award: 2013-14

Degree Awarded	Number	Percent of Total	Change from AY 2012-2013	
			Number	Percent Change
AA	2,370	13.9%	-97	-3.9%
AS	850	5.0%	92	12.1%
AGS	1,155	6.8%	-35	-2.9%
AAS	2,860	16.7%	-57	-2.0%
1-yr Certificate	8,113	47.4%	1,611	24.8%
2-yr Certificate	1,751	10.2%	-144	-7.6%
<b>CCCS Total</b>	<b>17,099</b>	<b>100.0%</b>	<b>1,370</b>	<b>8.7%</b>

Generally, Associate of Arts (AA), Associate of Science (AS), and Associate of General Studies (AGS) degrees are transfer-oriented awards, while the Associate of Applied Science (AAS) degree is considered to be a professionally oriented terminal award.

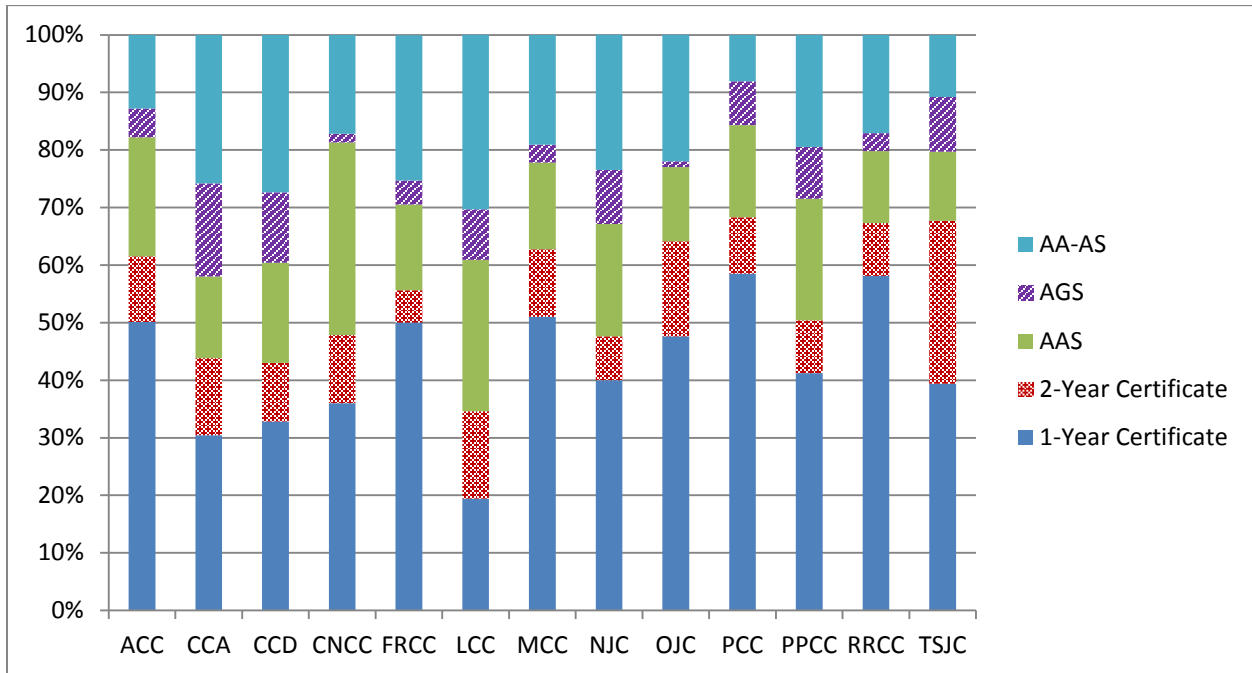
Please note this chart reflects a change in the method of reporting data on degrees awarded that was effective with the AY 2013-2014 and results in an increase in the number of degrees awarded. Prior to AY 2013-2014, a student receiving multiple awards within a single program area and degree level counted as one award. Now, all awards are counted. For example, prior to AY 2013-14, the data for a student who earned three welding certificates within an academic year was reported as one award, whereas now the data reflects all three awards. Under the old method, the data for AY 2013-2014 would have yielded 15,941 awards for an increase of 1.3 percent over the prior year.



### Degrees Awarded by College: 2013-14

College	1-Year Certificate	2-Year Certificate	AAS	AGS	AA-AS	Total Awards	% of CCCS Awards
ACC	50.1%	11.4%	20.7%	5.0%	12.8%	1,772	10.4%
CCA	30.4%	13.4%	14.2%	16.2%	25.8%	908	5.3%
CCD	32.8%	10.2%	17.4%	12.2%	27.4%	1,050	6.1%
CNCC	36.0%	11.8%	33.5%	1.5%	17.2%	203	1.2%
FRCC	50.0%	5.6%	14.9%	4.2%	25.2%	3,581	20.9%
LCC	19.4%	15.2%	26.3%	8.8%	30.4%	217	1.3%
MCC	51.0%	11.7%	15.1%	3.1%	19.1%	418	2.4%
NJC	40.0%	7.6%	19.5%	9.4%	23.6%	437	2.6%
OJC	47.6%	16.5%	12.9%	1.0%	22.1%	498	2.9%
PCC	58.5%	9.8%	16.0%	7.6%	8.1%	2,345	13.7%
PPCC	41.2%	9.2%	21.1%	9.0%	19.5%	2,639	15.4%
RRCC	58.1%	9.2%	12.5%	3.1%	17.1%	2,254	13.2%
TSJC	39.4%	28.3%	12.0%	9.5%	10.8%	777	4.5%
<b>Total CCCS</b>	<b>47.4%</b>	<b>10.2%</b>	<b>16.7%</b>	<b>6.8%</b>	<b>18.8%</b>	<b>17,099</b>	<b>100.0%</b>

\*Generally, AGS and AA/AS degrees are transfer-oriented awards, while the AAS degree is considered to be a professionally oriented terminal award.



### Top Degree Program by College\*: 2013-14

College	Name	Number of Awards	Percent of College Awards
ACC	Early Childhood Education	216	14.8%
CCA	Emergency Medical Services	124	23.5%
CCD	Emergency Medical Services	98	15.5%
CNCC	Nursing Aide	28	17.0%
FRCC	Nursing Aide	602	23.8%
LCC	Nursing	49	37.1%
MCC	Nursing Aide	69	21.2%
NJC	Business Administration	60	20.5%
OJC	Automotive Technology	76	19.8%
PCC	Office Administration	327	16.5%
PPCC	Nursing	450	23.8%
RRCC	Nursing Aide	156	8.7%
TSJC	Electrical Line Worker	140	22.6%

\*All degree levels, excluding Liberal Arts and General Studies.

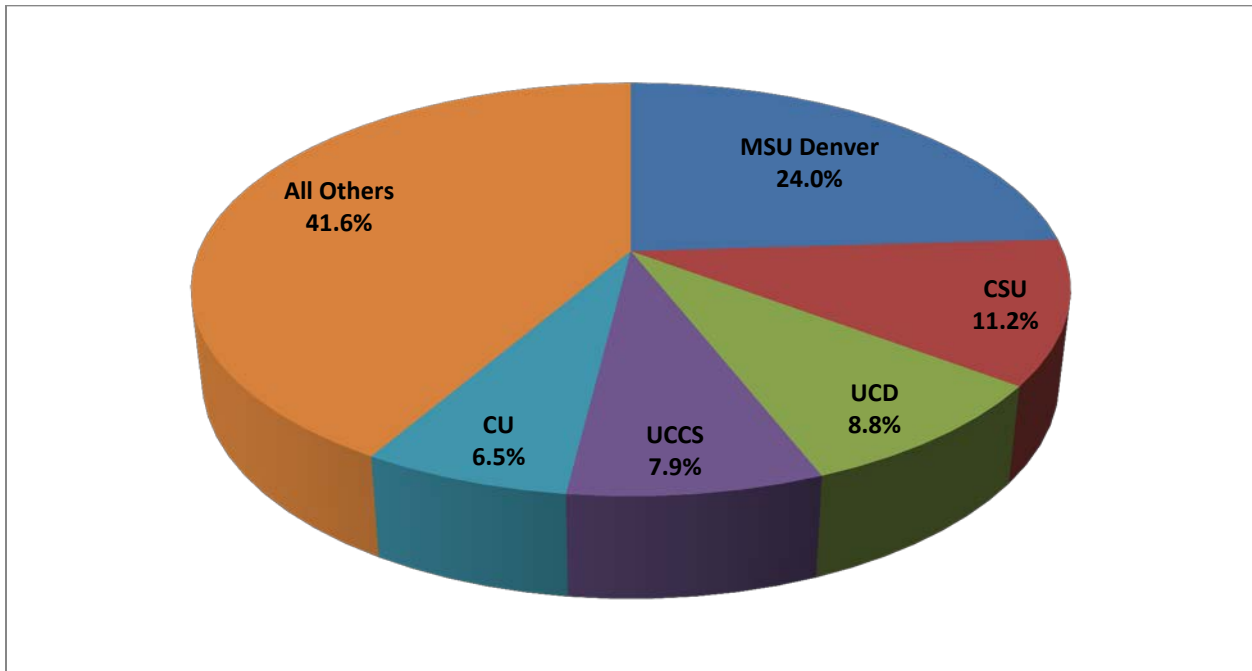
### Top Non-Healthcare Degrees Awarded by College\*: 2013-14

College	Name	Number of Awards	Percent of College Awards
ACC	Early Childhood Education	216	14.8%
CCA	Office Management and Supervision	114	21.6%
CCD	Paralegal	52	8.2%
CNCC	Natural Resources Ecology & Mgmt	24	14.5%
FRCC	Automotive Technologies	207	8.2%
LCC	Horse Training and Management	33	25.0%
MCC	Agricultural Business Management	28	8.6%
NJC	Business Administration	60	20.5%
OJC	Automotive Technologies	76	19.8%
PCC	Office Administration	327	16.5%
PPCC	Welding Technology	103	5.5%
RRCC	Accounting	119	6.6%
TSJC	Electrical Line Worker	140	22.6%

\*All degree levels, excluding Liberal Arts and General Studies.

**Top Five Four-Year Transfer Destinations  
From Fall 2012 to Fall 2013**

Transfer Destination	Students	% of Total Transfers to Four-Year Inst.
MSU Denver	2,771	24.0%
Colorado State University Fort Collins(CSU)	1,296	11.2%
University of Colorado Denver (UCD)	1,009	8.8%
University of Colorado Colorado Springs (UCCS)	911	7.9%
University of Colorado Boulder (CU)	744	6.5%
<b>Total of Top Five Destinations</b>	<b>6,731</b>	<b>58.4%</b>
<b>Total Transfers to Four-Year Colleges</b>	<b>11,524</b>	



**Total Number of Student Transfers and Top Four-Year Transfer Destinations  
Academic Years 2010-11 Through 2012-13**

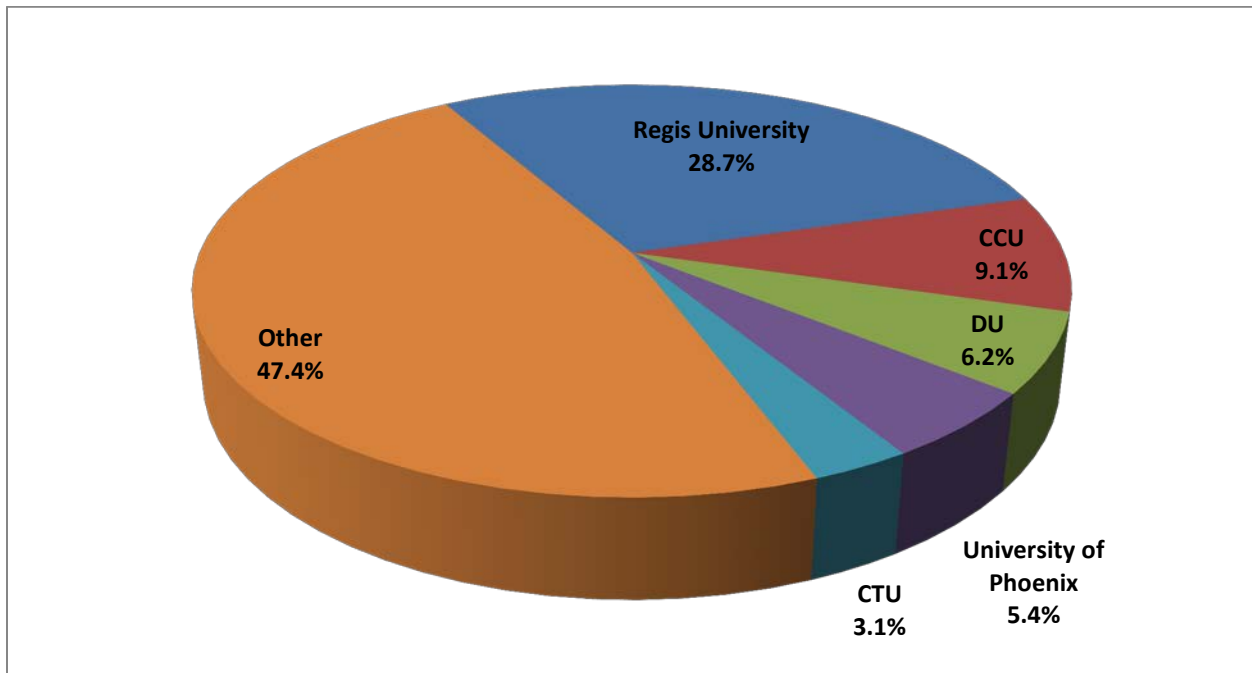
College	2010-2011		2011-2012		2012-2013	
	Total Transfers to Four-Year Institutions	Top Transfer Destination	Total Transfers to Four-Year Institutions	Top Transfer Destination	Total Transfers to Four-Year Institutions	Top Transfer Destination
ACC	902	Metro State	1,477	MSU Denver	1,532	MSU Denver
CCA	843	Metro State	981	MSU Denver	965	MSU Denver
CCD	2,577	Metro State	2,577	MSU Denver	2,050	MSU Denver
CNCC	148	CMU	166	CMU	172	CMU
FRCC	2,645	CSU	2,710	CSU	2,805	CSU
LCC	149	CSU - Pueblo	130	West Texas A&M	120	CSU - Pueblo
MCC	266	UNC	274	UNC	253	UNC
NJC	264	UNC	291	CSU	267	CSU/UNC
OJC	193	CSU - Pueblo	181	CSU - Pueblo	184	CSU - Pueblo
PCC	551	CSU - Pueblo	546	CSU - Pueblo	484	CSU - Pueblo
PPCC	1,353	UCCS	1,423	UCCS	1,444	UCCS
RRCC	1,029	Metro State	1,067	MSU Denver	1,053	MSU Denver
TSJC	230	Adams State	201	Adams State	195	Adams State
<b>CCCS Total</b>	<b>11,150</b>	<b>Metro State</b>	<b>12,024</b>	<b>MSU Denver</b>	<b>11,524</b>	<b>MSU Denver</b>

\*Transfer data based on attendance at a four-year college – public or private – in the following fall, as reported by the National Student Clearinghouse (NSC). An additional 1,131 Fall 2012 students transferred to two-year institutions. Not all institutions participate in the NSC.

**Notes:** Metropolitan State College (Metro State) changed its name to Metropolitan State University of Denver (MSU Denver), effective July 1, 2012.  
 CMU = Colorado Mesa University  
 UNC = University of Northern Colorado

**Top Five Four-Year Private Transfer Destinations  
From Fall 2012 to Fall 2013**

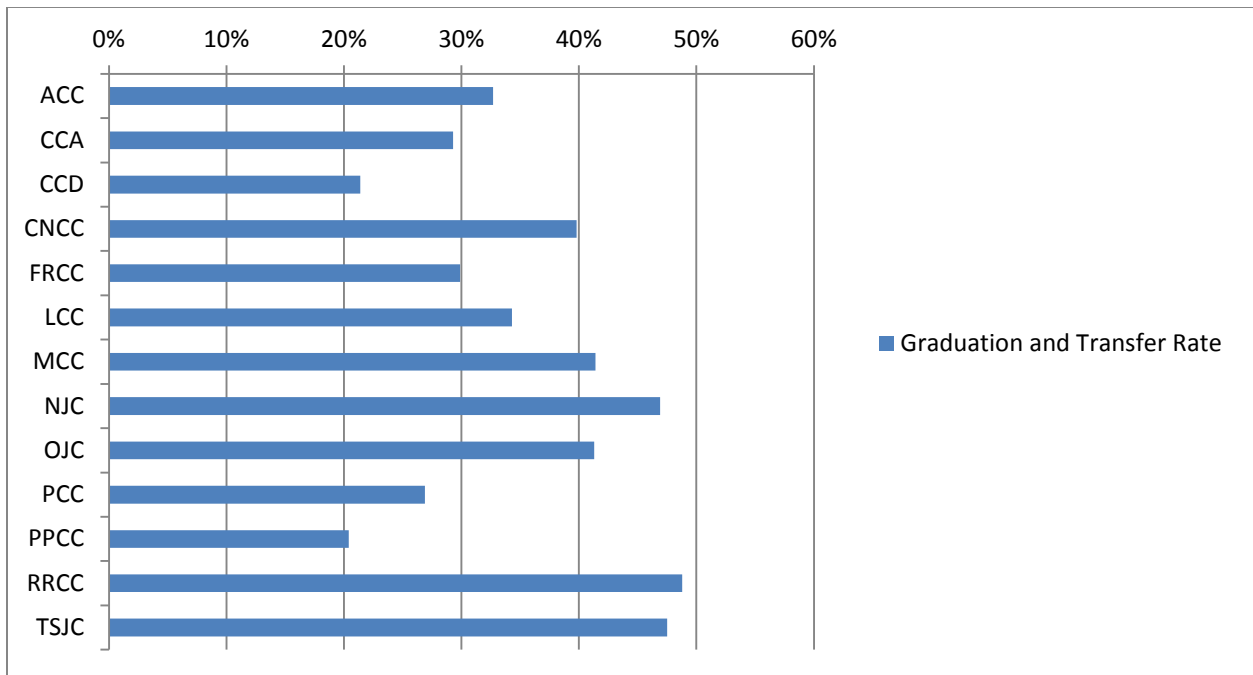
Private Transfer Destination	Students	% of Total Transfers to Private Four-Year Inst.
Regis University	562	28.7%
Colorado Christian University (CCU)	179	9.1%
University of Denver (DU)	122	6.2%
University of Phoenix	105	5.4%
Colorado Technical University (CTU)	61	3.1%
<b>Total of Top Five Destinations</b>	<b>1,029</b>	<b>52.6%</b>
<b>Total Transfers to Four-Year Private Colleges</b>	<b>1,957</b>	



**Three-Year Graduation and Transfer Rate  
For First-time, Full-time, Degree/Certificate-Seeking Students  
Fall 2010 Cohort Graduating in 2013**

College	2010 Cohort	Graduates	Graduation Rate	Transfers	Transfer Rate	Graduation and Transfer Rate
ACC	452	81	17.9%	67	14.8%	32.7%
CCA	475	96	20.2%	43	9.1%	29.3%
CCD	873	91	10.4%	96	11.0%	21.4%
CNCC	166	54	32.5%	12	7.2%	39.8%
FRCC	1,540	278	18.1%	183	11.9%	29.9%
LCC	134	38	28.4%	8	6.0%	34.3%
MCC	87	30	34.5%	6	6.9%	41.4%
NJC	407	146	35.9%	45	11.1%	46.9%
OJC	283	85	30.0%	32	11.3%	41.3%
PCC	666	157	23.6%	22	3.3%	26.9%
PPCC	1,305	188	14.4%	78	6.0%	20.4%
RRCC	836	176	21.1%	232	27.8%	48.8%
TSJC	301	118	39.2%	25	8.3%	47.5%
<b>CCCS Total</b>	<b>7,525</b>	<b>1,538</b>	<b>20.4%</b>	<b>849</b>	<b>11.3%</b>	<b>31.7%</b>

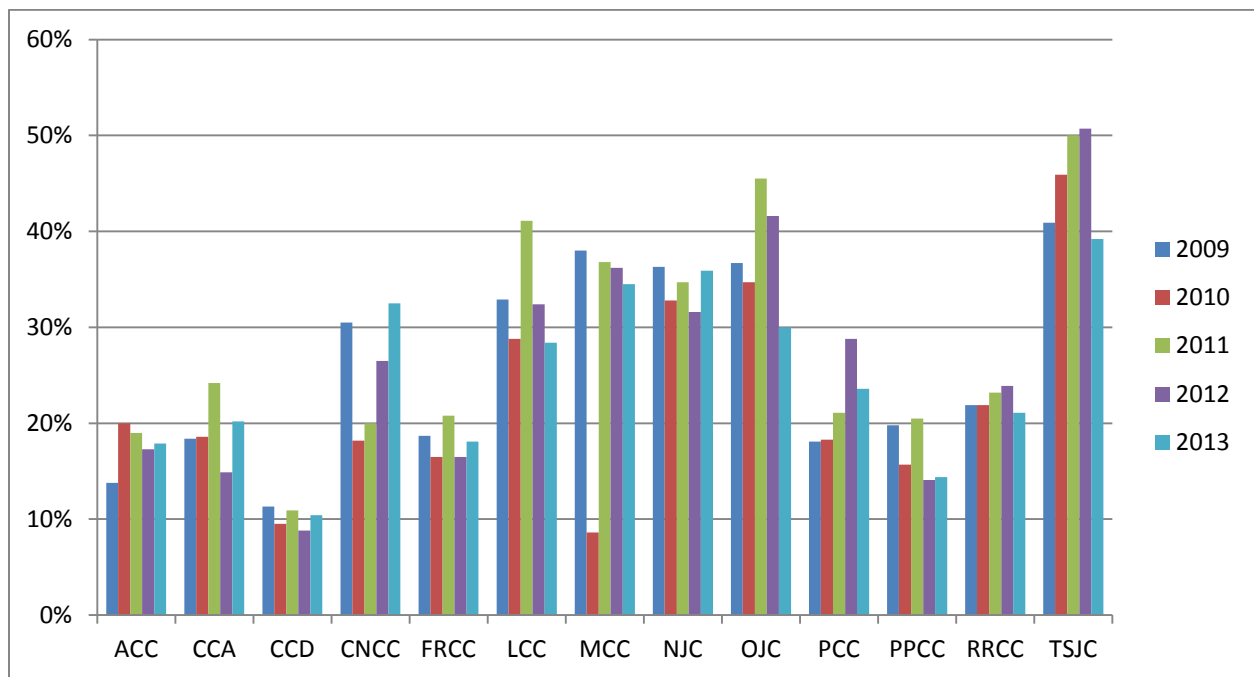
Source: IPEDS



**Three Year Graduation Rate Trends**  
**for First-time, Full-time, Degree/Certificate-Seeking Students**  
**By College - 2006 Cohort through 2010 Cohort\***

College	2006 Cohort Graduate by Summer 2009	2007 Cohort Graduate by Summer 2010	2008 Cohort Graduate by Summer 2011	2009 Cohort Graduate by Summer 2012	2010 Cohort Graduate by Summer 2013	2010 Cohort as % of Fall 2010 Headcount
ACC	13.8%	20.0%	19.0%	17.3%	17.9%	4.5%
CCA	18.4%	18.6%	24.2%	14.9%	20.2%	6.2%
CCD	11.3%	9.5%	10.9%	8.8%	10.4%	6.8%
CNCC	30.5%	18.2%	20.0%	26.5%	32.5%	11.4%
FRCC	18.7%	16.5%	20.8%	16.5%	18.1%	7.7%
LCC	32.9%	28.8%	41.1%	32.4%	28.4%	12.7%
MCC	38.0%	8.6%	36.8%	36.2%	34.5%	4.4%
NJC	36.3%	32.8%	34.7%	31.6%	35.9%	18.4%
OJC	36.7%	34.7%	45.5%	41.6%	30.0%	15.5%
PCC	18.1%	18.3%	21.1%	28.8%	23.6%	8.4%
PPCC	19.8%	15.7%	20.5%	14.1%	14.4%	8.5%
RRCC	21.9%	21.9%	23.2%	23.9%	21.1%	8.5%
TSJC	40.9%	45.9%	50.0%	50.7%	39.2%	15.7%
<b>CCCS</b>	<b>21.9%</b>	<b>20.3%</b>	<b>24.6%</b>	<b>21.2%</b>	<b>20.4%</b>	<b>8.0%</b>

\*Three-year graduation rate refers to completion of program within 150% of normal time.  
Source: IPEDS



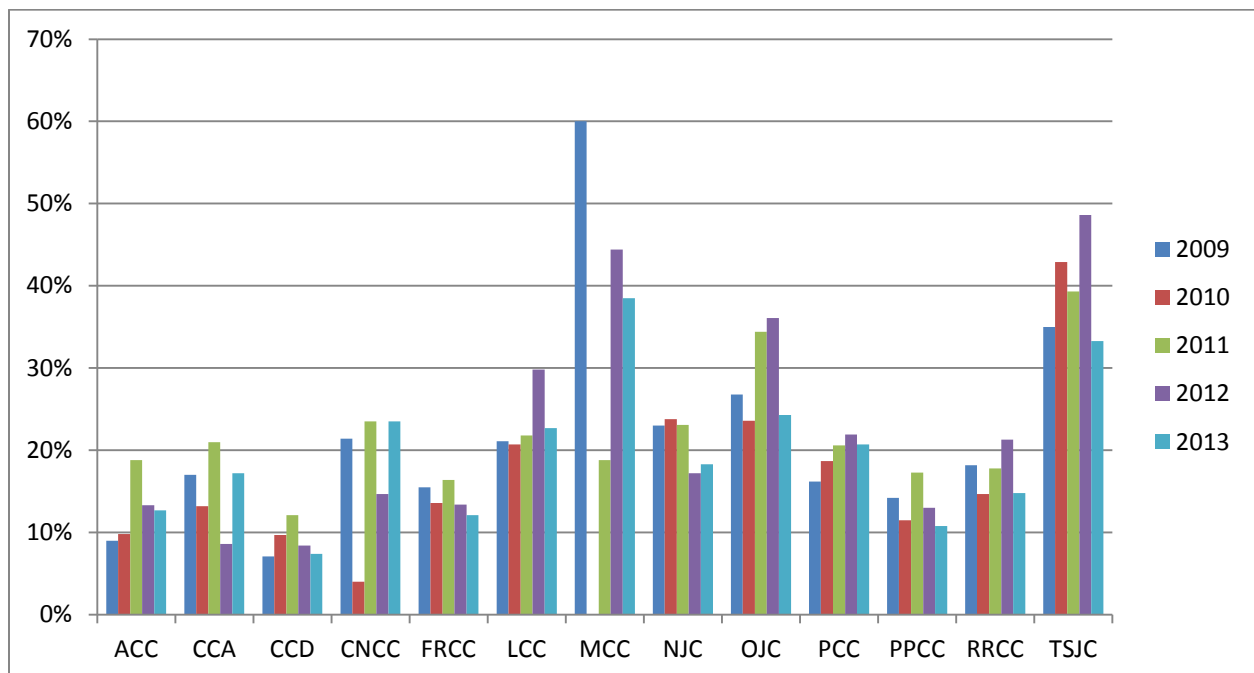


**Three Year Graduation Rate Trends - Minority Students**  
**First-time, Full-time, Degree/Certificate-Seeking Students**  
**By College - 2006 Cohort through 2010 Cohort\***

College	2006 Cohort Graduate by Summer 2009	2007 Cohort Graduate by Summer 2010	2008 Cohort Graduate by Summer 2011	2009 Cohort Graduate by Summer 2012	2010 Cohort Graduate by Summer 2013
ACC	9.0%	9.8%	18.8%	13.3%	12.7%
CCA	17.0%	13.2%	21.0%	8.6%	17.2%
CCD	7.1%	9.7%	12.1%	8.4%	7.4%
CNCC	21.4%	4.0%	23.5%	14.7%	23.5%
FRCC	15.5%	13.6%	16.4%	13.4%	12.1%
LCC	21.1%	20.7%	21.8%	29.8%	22.7%
MCC	60.0%	0.0%	18.8%	44.4%	38.5%
NJC	23.0%	23.8%	23.1%	17.2%	18.3%
OJC	26.8%	23.6%	34.4%	36.1%	24.3%
PCC	16.2%	18.7%	20.6%	21.9%	20.7%
PPCC	14.2%	11.5%	17.3%	13.0%	10.8%
RRCC	18.2%	14.7%	17.8%	21.3%	14.8%
TSJC	35.0%	42.9%	39.3%	48.6%	33.3%
<b>CCCS Total</b>	<b>17.1%</b>	<b>16.1%</b>	<b>20.4%</b>	<b>18.5%</b>	<b>15.3%</b>

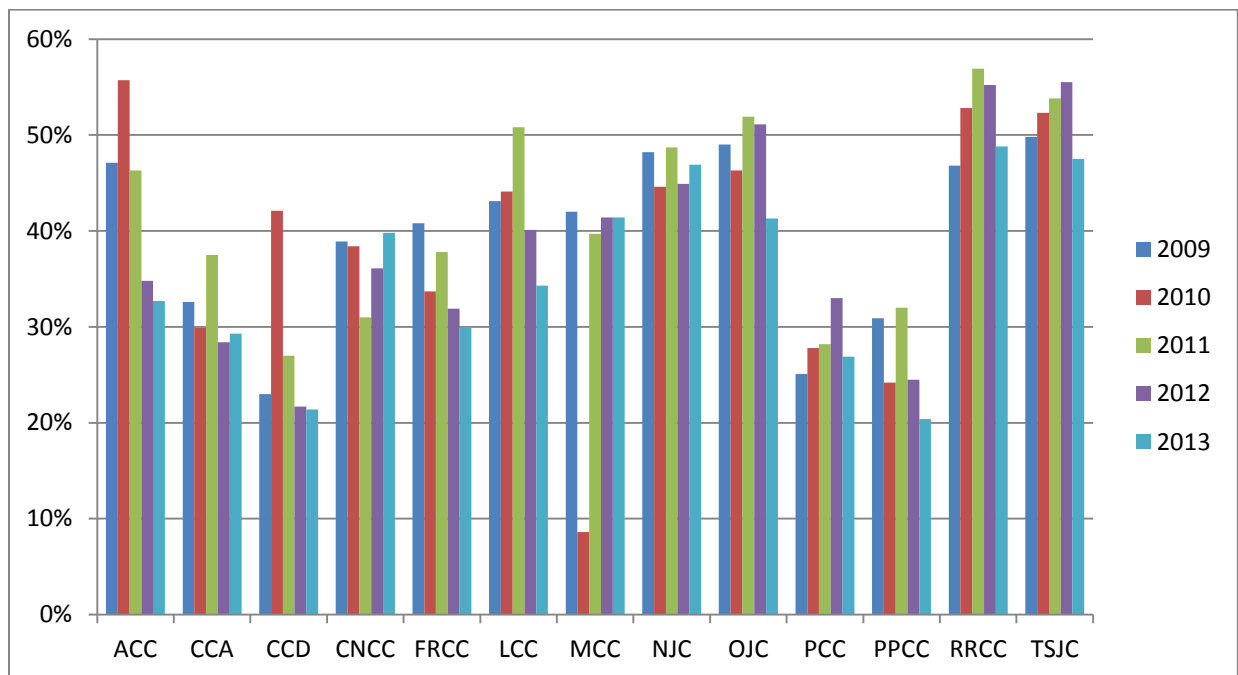
\*First-time, Fall, full-time, degree or certificate-seeking students who complete their program within 150 percent of normal time.

Source: IPEDS



Three-Year Combined Graduation and Transfer Rate Trends  
 First-time, Full-time, Degree/Certificate-Seeking Students  
 Fall 2006 Cohort Through Fall 2010 Cohort  
 Reported in 2009 Through 2013

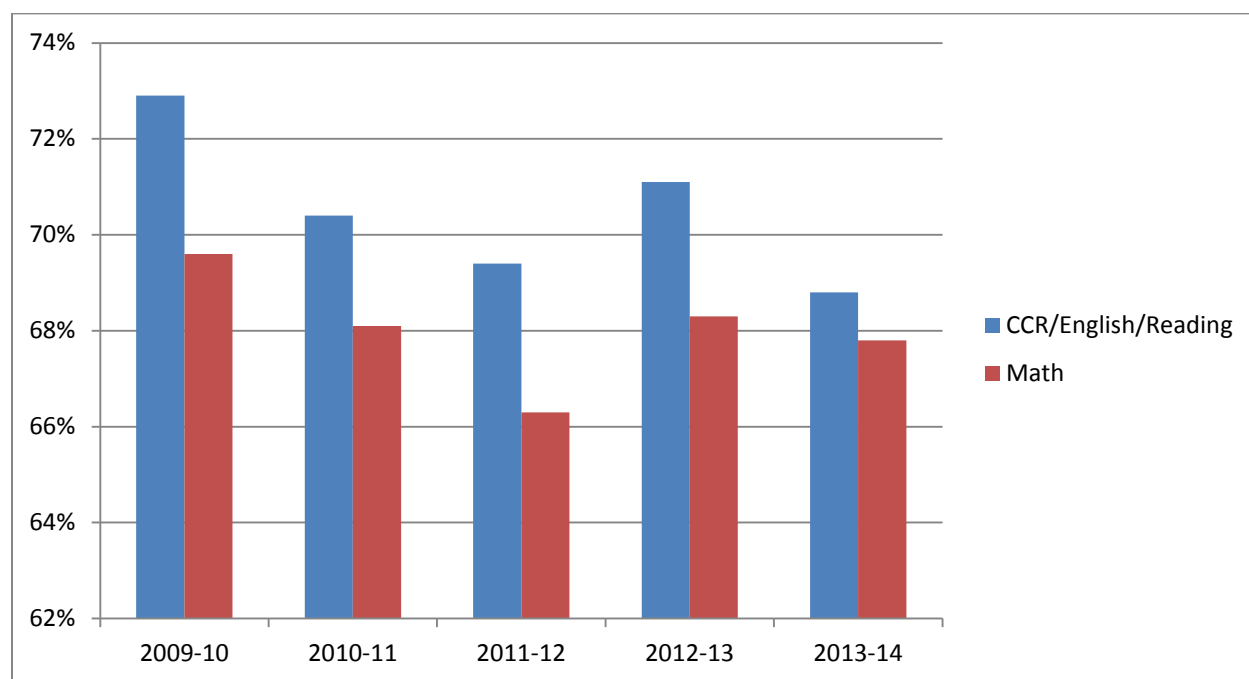
College	Graduation and Transfer Rate 2009	Graduation and Transfer Rate 2010	Graduation and Transfer Rate 2011	Graduation and Transfer Rate 2012	Graduation and Transfer Rate 2013
ACC	47.1%	55.7%	46.3%	34.8%	32.7%
CCA	32.6%	29.9%	37.5%	28.4%	29.3%
CCD	23.0%	42.1%	27.0%	21.7%	21.4%
CNCC	38.9%	38.4%	31.0%	36.1%	39.8%
FRCC	40.8%	33.7%	37.8%	31.9%	29.9%
LCC	43.1%	44.1%	50.8%	40.1%	34.3%
MCC	42.0%	8.6%	39.7%	41.4%	41.4%
NJC	48.2%	44.6%	48.7%	44.9%	46.9%
OJC	49.0%	46.3%	51.9%	51.1%	41.3%
PCC	25.1%	27.8%	28.2%	33.0%	26.9%
PPCC	30.9%	24.2%	32.0%	24.5%	20.4%
RRCC	46.8%	52.8%	56.9%	55.2%	48.8%
TSJC	49.8%	52.3%	53.8%	55.5%	47.5%
<b>CCCS Total</b>	<b>38.5%</b>	<b>37.4%</b>	<b>40.0%</b>	<b>35.0%</b>	<b>31.7%</b>



**Developmental Course Completion Rates by Subject  
Academic Years 2009-10 Through 2013-14**

Subject	2009-2010	2010-2011	2011-2012	2012-2013	2013-2014
CCR	n/a	n/a	n/a	n/a	62.0%
English	71.9%	70.1%	68.5%	70.7%	71.0%
Reading	74.9%	71.0%	71.0%	72.0%	73.0%
CCR/English/Reading	72.9%	70.4%	69.4%	71.1%	68.8%
Math	69.6%	68.1%	66.3%	68.3%	67.8%
<b>CCCS Total</b>	<b>70.9%</b>	<b>69.1%</b>	<b>67.6%</b>	<b>69.5%</b>	<b>68.2%</b>

Note: Course completion is defined as receiving a passing grade -- an A, B, C, or Satisfactory -- at the end of the term. The cohort for determining the rates is the sum of the passing and failing grades. College composition and reading (CCR) was introduced in a limited fashion in 2013-14 and will replace all reading English developmental courses in 2014-15. A "CCR/English/Reading" line is provided to aid in the transition between the two systems.



**Developmental Education Course Completion Rates  
By College - All Subjects  
Academic Years 2009-10 Through 2013-14**

College	2009-2010	2010-2011	2011-2012	2012-2013	2013-2014
ACC	75.4%	76.5%	77.9%	79.0%	72.9%
CCA	70.4%	68.6%	69.0%	72.0%	66.7%
CCD	68.9%	65.0%	60.4%	63.6%	63.7%
CNCC	82.2%	78.6%	75.6%	75.8%	68.8%
FRCC	74.3%	73.4%	74.1%	73.1%	73.3%
LCC	63.6%	62.7%	62.1%	60.6%	70.5%
MCC	87.9%	85.4%	78.2%	72.3%	75.4%
NJC	69.4%	73.5%	68.4%	75.3%	70.2%
OJC	68.5%	69.8%	73.5%	78.8%	74.8%
PCC	74.4%	71.1%	70.2%	78.1%	76.9%
PPCC	65.7%	64.4%	63.6%	62.8%	64.9%
RRCC	70.2%	70.3%	68.4%	71.5%	65.4%
TSJC	73.2%	76.5%	78.6%	74.3%	69.8%
<b>CCCS Total</b>	<b>70.9%</b>	<b>69.1%</b>	<b>67.6%</b>	<b>69.5%</b>	<b>68.2%</b>

Note: Course completion is defined as a passing grade – an A, B, C, or Satisfactory – at the end of the term. The cohort for determining the rate is the number of passing and failing grades.

**Developmental Education Course Enrollment  
Percent of Total Students Enrolled in One or More Developmental Courses  
Academic Years 2009-10 Through 2013-14**

College	2009-2010	2010-2011	2011-2012	2012-2013	2013-2014
ACC	15.2%	17.0%	15.7%	15.1%	13.5%
CCA	24.4%	25.0%	24.8%	25.8%	21.5%
CCD	49.1%	53.1%	53.5%	50.1%	41.0%
CNCC	14.0%	13.9%	14.0%	14.2%	14.0%
FRCC	24.8%	25.6%	25.2%	24.2%	21.3%
LCC	19.0%	16.6%	14.9%	18.4%	13.8%
MCC	10.8%	12.4%	11.3%	11.2%	9.3%
NJC	13.0%	16.6%	19.4%	18.4%	17.7%
OJC	20.4%	23.6%	21.7%	21.5%	17.1%
PCC	31.9%	28.9%	27.6%	24.4%	19.0%
PPCC	32.9%	34.9%	34.8%	32.6%	30.7%
RRCC	17.4%	20.3%	20.9%	20.4%	19.2%
TSJC	22.2%	21.5%	23.1%	20.3%	15.9%
<b>CCCS Total</b>	<b>26.7%</b>	<b>28.5%</b>	<b>28.2%</b>	<b>26.6%</b>	<b>22.9%</b>

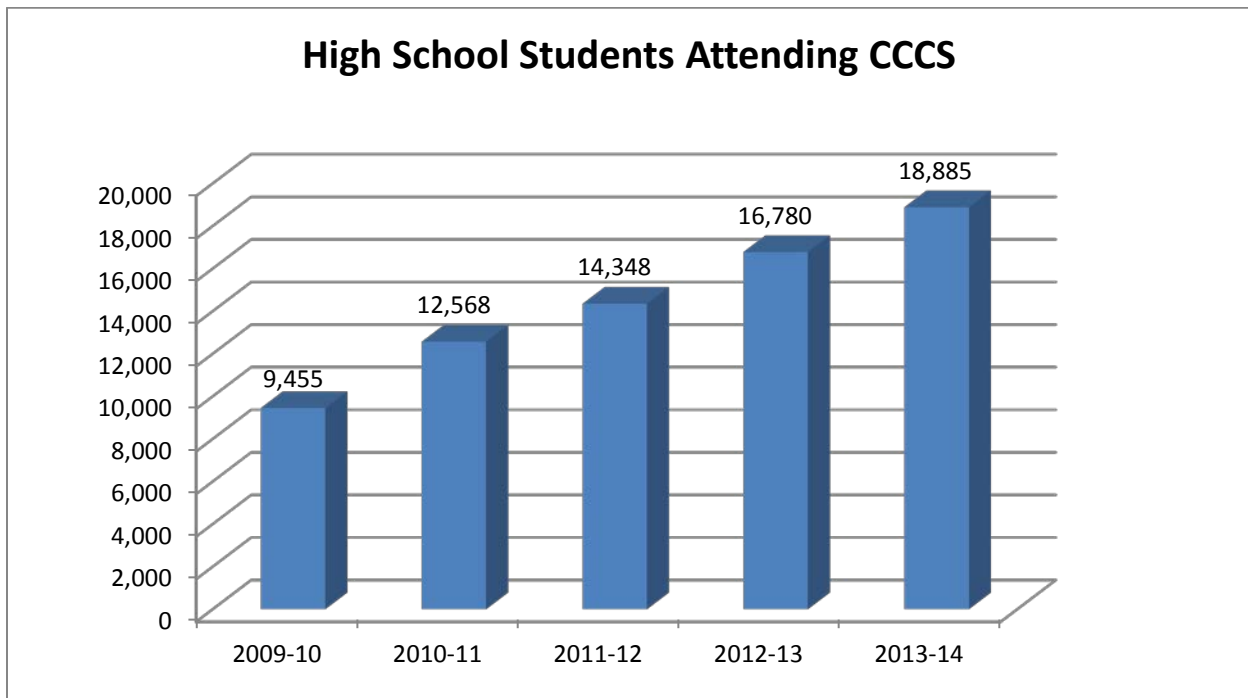
**Developmental Education Course Enrollment**  
**Percent of FTE Students Enrolled in One or More Developmental Courses**  
**Academic Years 2009-10 Through 2013-14**

<b>College</b>	<b>2009-2010</b>	<b>2010-2011</b>	<b>2011-2012</b>	<b>2012-2013</b>	<b>2013-2014</b>
ACC	9.1%	9.8%	10.3%	10.2%	8.9%
CCA	11.4%	11.7%	12.6%	17.3%	10.2%
CCD	23.3%	26.2%	26.8%	25.1%	19.4%
CNCC	18.5%	10.6%	19.2%	20.2%	7.0%
FRCC	10.1%	10.2%	10.4%	10.1%	8.9%
LCC	7.6%	6.4%	5.2%	5.6%	4.5%
MCC	2.0%	6.4%	5.6%	5.9%	4.2%
NJC	9.2%	9.5%	7.2%	8.8%	8.9%
OJC	6.9%	9.3%	8.7%	8.8%	6.4%
PCC	16.7%	16.1%	15.2%	14.3%	9.0%
PPCC	13.3%	14.9%	15.4%	14.4%	13.5%
RRCC	7.5%	8.5%	9.2%	8.9%	8.6%
TSJC	8.9%	7.0%	8.0%	8.1%	5.2%
<b>CCCS Total</b>	<b>12.4%</b>	<b>13.3%</b>	<b>13.6%</b>	<b>13.4%</b>	<b>10.7%</b>

As reported to CDHE in the annual FTE submission.

**High School Students Attending CCCS Colleges  
2009-10 Through 2013-14**

College	AY 2009-10		AY 2010-11		AY 2011-12		AY 2012-13		AY 2013-14		Five-Year Change
	Count	% Chg	Count	% Chg	Count	% Chg	Count	% Chg	Count	% Chg	
ACC	1,049	74.3%	1,988	89.5%	2,532	27.4%	2,964	17.1%	3,553	19.9%	238.7%
CCA	1,115	88.7%	2,212	98.4%	2,763	24.9%	3,002	8.7%	3,185	6.1%	185.7%
CCD	974	84.5%	968	-0.6%	1,114	15.1%	1,554	39.5%	1,851	19.1%	90.0%
CNCC	338	-7.7%	424	25.4%	394	-7.1%	409	3.8%	488	19.3%	44.4%
FRCC	889	59.0%	1,119	25.9%	1,553	38.8%	2,206	42.0%	2,583	17.1%	190.6%
LCC	415	-9.4%	396	-4.6%	400	1.0%	411	2.8%	387	-5.8%	-6.7%
MCC	612	0.0%	750	22.5%	746	-0.5%	750	0.5%	856	14.1%	39.9%
NJC	326	7.2%	367	12.6%	353	-3.8%	418	18.4%	388	-7.2%	19.0%
OJC	463	33.8%	554	19.7%	481	-13.2%	516	7.3%	584	13.2%	26.1%
PCC	769	-17.2%	1,068	38.9%	1,204	12.7%	1,154	-4.2%	1,210	4.9%	57.3%
PPCC	1,340	28.1%	1,432	6.9%	1,363	-4.8%	1,797	31.8%	1,749	-2.7%	30.5%
RRCC	838	5.9%	909	8.5%	1,115	22.7%	1,198	7.4%	1,491	24.5%	77.9%
TSJC	327	9.0%	381	16.5%	330	-13.4%	401	21.5%	560	39.7%	71.3%
<b>CCCS Total</b>	<b>9,455</b>	<b>27.2%</b>	<b>12,568</b>	<b>32.9%</b>	<b>14,348</b>	<b>14.2%</b>	<b>16,780</b>	<b>17.0%</b>	<b>18,885</b>	<b>12.5%</b>	<b>99.7%</b>



## Glossary of Terms

**American Indian or Alaskan Native:** A person having origins in any of the original peoples of North America and who maintains cultural identification through tribal affiliation or community recognition.

**Asian or Pacific Islander:** A person having origins in any of the original peoples of the Far East, Southeast Asia, the Indian Subcontinent, or the Pacific Islands. This area includes, for example, China, Japan, Korea, the Philippine Islands, and Samoa.

**Associate Degree:** Normally requires at least two but less than four years of full-time equivalent college work. Associate of Arts (AA), Associate of Science (AS), and Associate of General Studies (AGS) degrees are transfer-oriented awards, while Associate of Applied Science (AAS) degrees are considered professionally oriented, terminal awards.

**Black, non-Hispanic:** A person having origins in any of the black racial groups of Africa (except those of Hispanic origin).

**Certificate** (at least one but less than two academic years): Requires completion of a program that would be completed in at least one but less than two full-time equivalent academic years, or designed for completion at least 30 but less than 60 credit hours, or in at least 900 but less than 1,800 contact hours.

**Certificate** (less than one year): Requires completion of a program that would be completed in less than one academic year or less than 900 contact hours by a student enrolled full time.

**Continuing:** A student who was enrolled previously at the institution at the current level, including readmitted students, but excluding students considered new transfers, HS concurrent students, summer only students, or study abroad only students.

**Degree Level:** The level of degree/diploma/certificate conferred by the institution upon the student for the successful completion of a program.

**Degree-seeking Students:** Students enrolled in courses who are recognized by the institution as pursuing: 1) a degree, certificate, or other formal award conferred by a public institution and approved by CCHE, or 2) a degree, certificate, or other formal award conferred by a private institution.

**Developmental Courses:** Courses that focuses on the fundamental knowledge and skills in reading, writing and mathematics that individuals need to function productively in society.

**First-time:** A student attending post-secondary education for the first time after high school at the level enrolled, where level means undergraduate or graduate.

**Graduation Rate:** Data are collected on the number of students entering the institution as full-time, first-time, degree/certificate-seeking undergraduate students in a particular year (cohort), by race/ethnicity

and gender; the number completing their program within 150 percent of normal time to completion and the number that transfer to other institutions if transfer is part of the institution's mission.

**Hispanic:** A person of Mexican, Puerto Rican, Cuban, Central or South American, or other Spanish culture or origin, regardless of race.

**Integrated Postsecondary Education Data System (IPEDS):** a system of interrelated surveys conducted annually by the U.S. Department of Education's National Center for Education Statistics (NCES). IPEDS gathers information from every college, university, and technical and vocational institution that participates in federal student financial aid programs.

**Non-degree Seeking:** Enrolled in courses but does not have intentions of pursuing a formal degree or award.

**Non-resident Alien:** A person who is not a citizen or national of the United States and who is in this country on a temporary basis and does not have the right to remain indefinitely.

**Race/Ethnicity:** The group to which an individual appears to belong, identifies with, or is regarded in the community as belonging.

**Registration Status:** The student's status at the reporting institution.

**Student Level:** The level at which a student is classified during the term which is being reported, based upon the total credits obtained toward completion of a degree/certificate program.

**Transfer:** A student for whom this term is the student's first term at the institution at the current level, where level is undergraduate or graduate, and the student is known to have previously attended a postsecondary institution at the same level after high school.

**Two-year Program:** Enrollment is in a non-vocational, sub-baccalaureate program.

**Unclassified:** A student enrolled in a degree program but who cannot be classified by academic level (e.g., a transfer student whose credits have not been evaluated).

**Vocational Programs:** Enrollment is in an occupational-specific sub-baccalaureate program.

**White, non-Hispanic:** A person having origins in any of the original peoples of Europe, North Africa, or the Middle East (except those of Hispanic origin).

Source: Colorado Department of Higher Education and IPEDS.